

GH-100 / GC-100 Dry Bath Incubator

///Introduction

GH-100/GC-100 is a microprocessor-controlled device with LCD, can control the temperature precisely, which greatly shortens the experimental time and improves the efficiency. It can be widely used in samples cultivation, preservation and reaction. It has multi-purpose functions such as heating and custom programs to meet the needs of different users.



///Features

- 5 stored-programs, each can run separately, also can be linked and cycled
- A variety of alloy aluminum blocks easy to change
- Fast heating speed, precise and stable
- Controlled by PID, high accuracy and good conformity
- LCD display with timer and temperature
- Temperature calibration
- Buzzer alarm after program over



Various blocks



Over-temperature protect



High precision

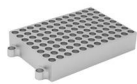


Timer

///Product parameters

Model	GH-100	GC-100	Model	GH-100	GC-100
Temperature control mode	Heating membrane	Semi-conductor	Heating Up Rate	≤ 15min(20°C to 100°C)	
Temperature control range	RT+5°C ~100°C	RT-30°C ~100°C	Max.Temperature	100°C	
Temperature Set Range	5° C~100° C	-10°C ~100°C	Cooling Down Rate	---	≤ 30min 100-25°C
Temperature accuracy	±0.3°C				≤ 30min Cooling down 30degrees from room temperature(test under RT26°C)
Temperature Stability	±0.3°C		Power	150W	130W
Timer	1m-99h59m/0: infinite time		Weight	2.8kg	4.3kg
Display accuracy	0.1°C		Dimension (W×D×H)	220x300x170 (mm)	

Yooning is committed to manufacturing high quality laboratory equipment.



A1



A2



A3



A4



A5



A6



A7



A8



A8-2



A9



A10



A11



A12



A13

Optional lids



L-A
152x113x45



L-B
145×105×62.5



L-C
145×105×122.5

Item	Model	Compliance to
Lid	L-A	A1-A9
Lid	L-B	A10-A11
Lid	L-C	A12-A14

HC-100/HH-100/GH/GC-100 Series blocks

Optional Blocks

Type	Capacity	Max. Temperature	Type	Capacity	Max. Temperature	Type	Capacity	Max. Temperature
A1	96x0.2ml PCR plate (φ6.7x16)	100°C	A6	24xφ12mm x30 tubes	100°C	A10	96x0.2ml Elisa (Flat bottom)	100°C
A2	54x0.5ml tubes (φ8x23)	100°C	A7	32x0.2ml+25x1.5ml tubes	100°C	A11	24x5ml (φ13.5x30)	100°C
A3	35x1.5ml tubes (φ10.8x31)	100°C	A8	32x0.2ml+10x0.5ml+15x1.5ml tubes	100°C	A12	12x15ml (φ16.9x98)	100°C
A4	35x2.0ml tubes (φ10.8x31)	100°C	A8-2	32x0.2ml+10x0.5ml+15x2.0ml tubes	100°C	A13	6x50ml (φ29.5x90)	100°C
A5	20x0.5ml+15x1.5ml tubes	100°C	A9	103x67x30 (water tank)	100°C	A14	12x10ml (φ15.9x65)	100°C