

DC-100/DH-100 Heated Lid Dry Bath Incubator



/// Introduction

DC-100/DH-100 is a Dry Bath Incubator with heated lid controlled by a microcomputer, excellent temperature control due to advanced semiconductor technology (Peltier-Based), which can work as a thermal cycler. DH-100 can heat, DC-100 can heat and cool, they can be used for sample preservation and rection, DNA amplification and protein denaturation treatment, and etc.

/// Features

- ◆ DC-100 : Heat & Cool with heated lid, programmable thermal cycler programs are available
- ◆ DH-100 : Heat with heated lid
- Impact design, small size
- Heated lid function can be on/off according to needs
- High precise and good uniformity in temperature, fast heating and cooling rate
- 5 inch touch screen display temperature and time, easy to edit, heating lid temperature can be individually set/displayed



TFT display



Good Temperature uniformity



Heated lid



Timer

/// Product parameters

Model	DC-100	DH-100	Model	DC-100	DH-100
Voltage	AC100~230V, 50/60Hz	AC100~120V/ AC100~240V, 50/60Hz	Display Accuracy	0.1°C	
Block Temperature Setting Range	R.T. -30° ~105C	R.T. +5°C ~105°C	Heating Up Rate (R.T. 25°C)	37°C -100°C ≤ 7°C /min	
Temperature Set Range	-10°C ~105°C	0°C ~105°C	Cooling Rate	100°C -37°C ≤ 7°C /min	---
Lid Temperature Setting Range	R.T. +5°C ~110°C		Max.Steps	10	
Timer	1s~99min59sec (0 means infinite)		Max.Cycles	99	
Block Temperature Accuracy	±0.5°C		Max.Power	300W	180W
Lid Temperature Accuracy	±1.0°C		Dimension (W×D×H)	200x315x175 (mm)	
Block Temperature Uniformity	±0.3°C (@37°C)		Weight	3.3kg	2.8kg

/// Optional Blocks

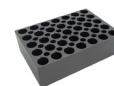
Type	Capacity
R1	96×0.2ml (φ5.37×10.5)
R2	54×0.5ml (φ8×20.3)
R3	35×1.5ml (φ10.8×30.5)
R4	35×2.0ml (φ10.8×32)



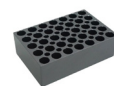
R1



R2



R3



R4